

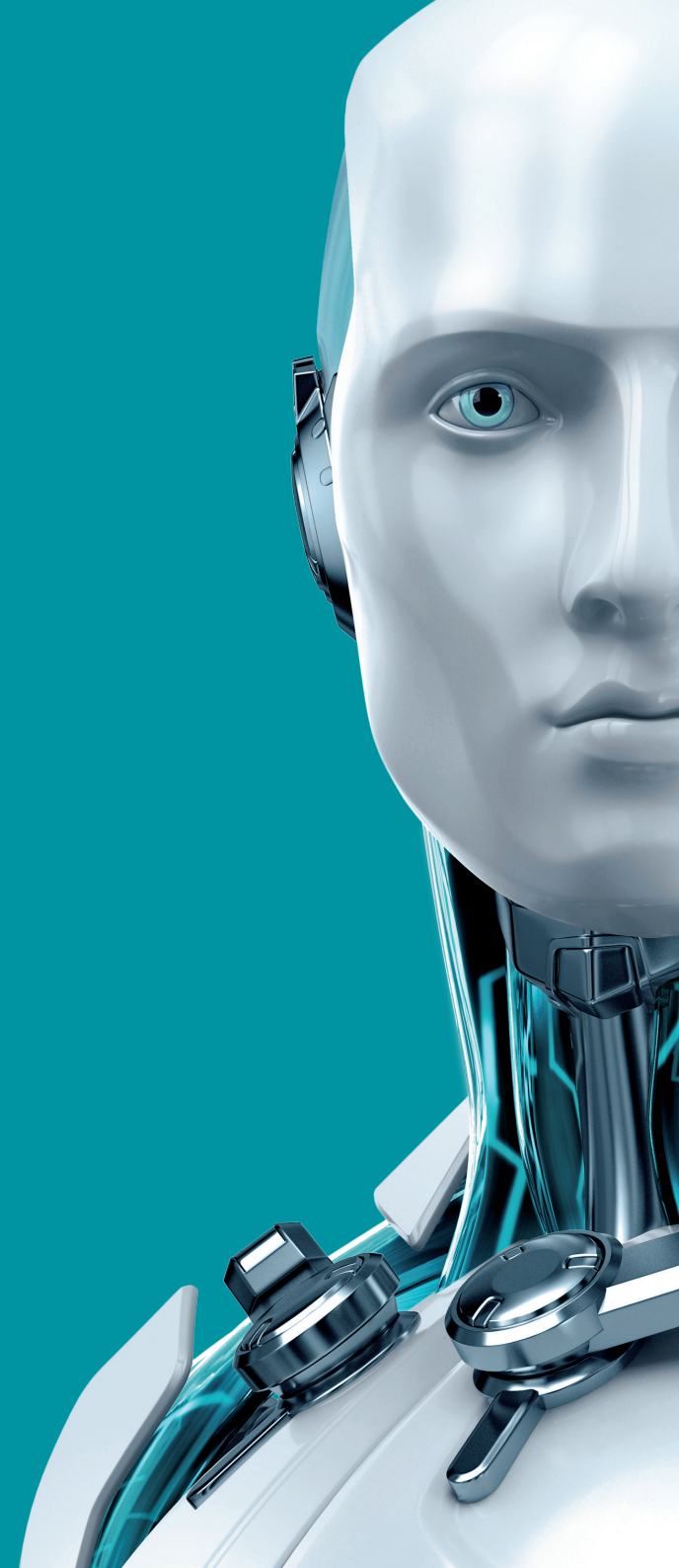


# DIRECT ENDPOINT MANAGEMENT

PLUGIN FOR CONNECTWISE AUTOMATE



ENJOY SAFER TECHNOLOGY™





# DIRECT ENDPOINT MANAGEMENT

PLUGIN FOR CONNECTWISE AUTOMATE

ConnectWise Automate Remote Monitoring and Management (RMM) platform, ConnectWise Automate Control Center is widely used to manage a variety of IT services including antimalware and endpoint security. ESET offers a solution for delivering best-in-class malware protection through the ConnectWise Automate environment.

The ESET Direct Endpoint Management Plugin for ConnectWise Automate (formerly LabTech) integrates with the ConnectWise Automate Control Center to provide central management of ESET Endpoint Solutions across distributed networks. Controlling ESET's powerful, proactive malware detection using ConnectWise Automate's familiar console delivers ease of endpoint deployment, ongoing administration and a common interface for configuring and reporting.

## Benefits

---

<b>Comprehensive endpoint security</b>	Offer best-of-breed antimalware options to your network of managed clients. Replace existing solutions with ESET's lightweight clients for low system resource usage and proactive detection of multiple threat vectors using advanced malware detection technologies.
<b>Ease of management</b>	The familiar ConnectWise Automate console provides ease of management and adoption of ESET solutions without requiring a second console. ESET endpoint security can be remotely deployed using the plugin.
<b>Satisfied end users</b>	Real-time monitoring and remediation helps resolve security issues quickly and makes for confident helpdesk techs and satisfied end users.

---

## Features

---

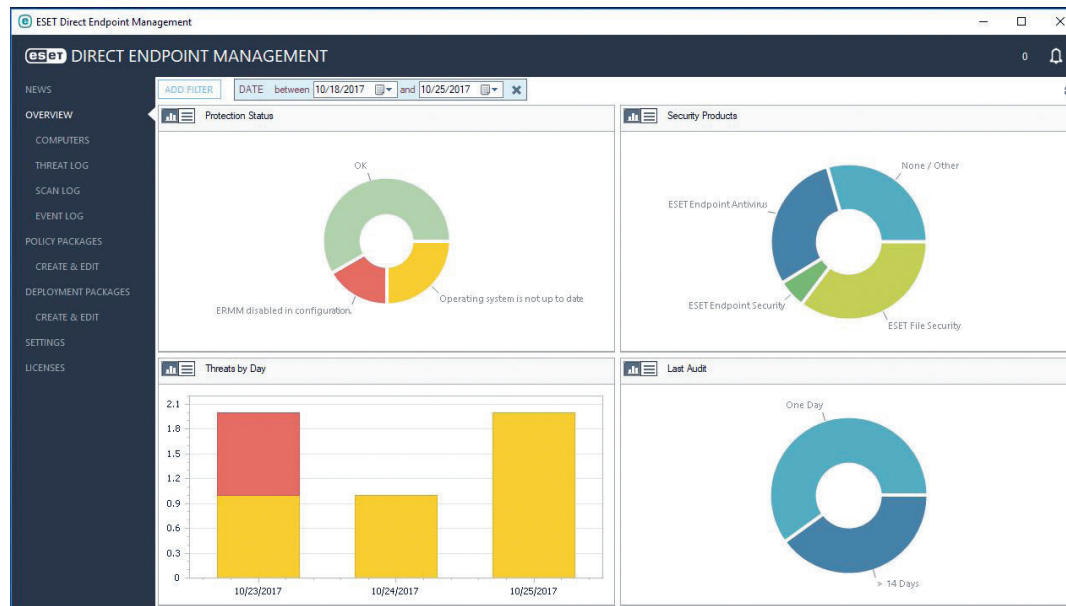
<b>Manage client endpoint security</b>	Initiate on-demand endpoint scans, module updates and ESET security product activation, without requiring the ESET Remote Administrator Server.
<b>Manage client configurations</b>	Set ESET-specific configuration policies on Windows® endpoint and server clients. Create new policies or upload existing XML configurations exported from the ESET security software. Manage every available ESET configuration option including Spam, Firewall, HIPS, Device Control and Web Control modules.
<b>Monitor threats</b>	View and sort threat data, see which client workstations have detected threats, the time of detection, the name of the threat and any actions taken.
<b>Dashboards</b>	At-a-glance views into protection status, product distribution, module update date, # of threats detected daily, deployment information and pending policy updates.
<b>Reporting</b>	Export a report from the ESET DEM Plugin for ConnectWise Automate to view various data about client systems such as log details for scans, events, and threats, license utilization, and unprotected systems. Uses ESET Remote Administrator inspired sorting and filtering.
<b>Alert management</b>	Example ConnectWise Automate "Internal Monitors" provided to allow for alerts on the status of your ESET environment.

---

Easily manage ESET endpoints through familiar ConnectWise Automate console.

COMPUTER NAME	CLIENT	LOCATION	PRODUCT NAME	PRODUCT VERSION	MODULE VERSION	PROTECTION STATUS	LAST AUDIT
08ERA5		Main					2017-10-0
1ZDLPES		Main	ESET File Security	6.5.12010.0	16252 (20171016)		2017-10-1
7WINTEST		Main	ESET Endpoint Antivirus	5.0.2265.0	13718 (20160608)		2017-06-0
ALTSERVER2012R2		New Computers	ESET File Security	6.5.12007.0	16289 (20171023)	Operating system is not up ...	2017-10-2
BA-LTCLIENT1		Test Location	ESET Endpoint Antivirus	6.6.2052.0	16296 (20171024)		2017-10-2
BA-LTCLIENT2		Test Location	ESET Endpoint Antivirus	6.6.2046.0	16070 (20170912)		2017-09-1
BI-WIN2K8		Test Location	ESET File Security	6.5.12010.0	16301 (20171025)	Operating system is not up ...	2017-10-2
DC01		Main					2017-10-2
DC02		Main					2017-10-2
era.joe-burg.com		Main					2017-10-2
ERA65		Main	ESET File Security	6.5.12010.0	16301 (20171025)	Operating system is not up ...	2017-10-2
ERA65		Main	ESET File Security	6.5.12010.0	16253 (20171016)		2017-10-1
ERA-CLIENT3		Main	ESET Endpoint Antivirus	6.6.2052.0	16296 (20171024)		2017-10-2
EXCHANGE		Main					2017-10-2
LABTECH-SERVER		Main	ESET File Security	6.5.12010.0	16295 (20171024)		2017-10-2
mysq.joe-burg.com		Main					2017-10-2
OWNER-PC		Main	ESET Endpoint Security	6.6.2046.0	16219 (20171010)	ERMM disabled in configura...	2017-10-1
PROXY		Main					2017-10-2
WINDOWS10PROX64		New Computers					
Total Computers: 20							

Easily manage ESET endpoints through familiar ConnectWise Automate console.



## System requirements

### ESET Business Product Licenses

Active licenses of any of the following ESET endpoint products:

- ESET Endpoint Antivirus for Windows
- ESET Endpoint Security for Windows
- ESET Endpoint products (6.6+) for Windows
- ESET Server products (6.5+) for Windows

### ConnectWise Automate 11 or newer\*\*

\*\*To review ConnectWise Automate system requirements, please visit ConnectWise Automate's website.

Copyright © 1992–2018 ESET, spol. s r. o. ESET, ESET logo, ESET android figure, NOD32, ESET Smart Security, SysInspector, ThreatSense, ThreatSense.Net, LiveGrid, LiveGrid logo and/or other mentioned products of ESET, spol. s r. o., are registered trademarks of ESET, spol. s r. o. Windows® is a trademark of the Microsoft group of companies. Other here mentioned companies or products might be registered trademarks of their proprietors. Produced according to quality standards of ISO 9001:2000.

