



DIRECT ENDPOINT MANAGEMENT

PLUGIN FOR
SOLARWINDS N-CENTRAL

CYBERSECURITY
EXPERTS ON YOUR SIDE

Benefits

FAST DEPLOYMENT

With the in-built install and activation capabilities, you're customer's network is protected within minutes.

QUICK LEARNING CURVE

The direct endpoint management plugin connects directly to the familiar environment of SolarWinds N-Central. No need to learn how to use it.

BEST PLUGIN FUNCTIONALITY

With ESET Direct Endpoint Management plugin for SolarWinds N-Central, you get the best endpoint protection plugin, with the widest range of capabilities and automation options.

SAVE TIME AND MONEY

The plugin's capabilities combined with ESET's trademark detection and extremely low support burden give you an unparalleled profit-per-seat ratio.

How to automate

These are the examples of how you can use the plugin components to your advantage to automate the management of endpoint security, and save time creating and resolving tickets.

1. AUTOMATICALLY SCAN A DEVICE AFTER THREAT DETECTION

Situation: When a new threat is detected on an endpoint, you may want more than just an alert or ticket.

How to automate: Combine Monitoring and Task components to automatically trigger a full-disk scan when a new threat has been detected.

3. ENSURE DETECTION DEFINITIONS UPDATES

Situation: While ESET antimalware has a default update task running, you can set up an additional remote update in case the default one fails.

How to automate: If the endpoint reports that it hasn't been updated in the specified time frame.

2. ENSURE CONTINUOUS PROTECTION

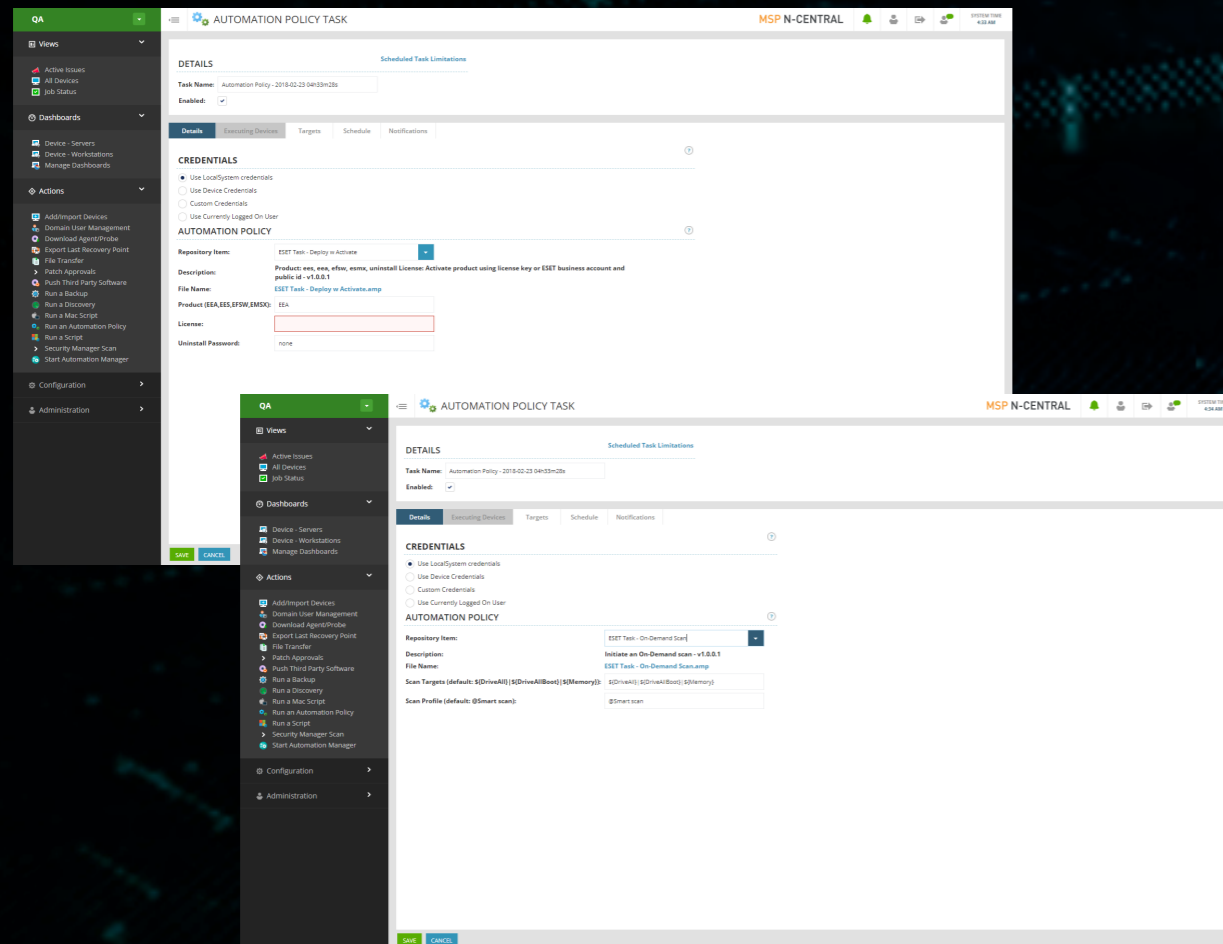
Situation: For any number of reasons, customers' endpoints may end up without ESET installed or activated antimalware.

How to automate: To achieve continuous uptime, combine Monitoring and Deployment or Task Components. For situations where you receive a not-installed alert, have Deployment tool automatically run remote installation. Trigger automatic activation task for each not installed alert in chronological order.

4. ENFORCE CONFIGURATION

Situation: You want to make sure that all devices within the given group are using the same configuration policies.

How to automate: Have the Task component regularly run on the device group and overwrite any configuration that is older than the specified time frame. Have the Task component apply the desired configuration.



Questions about a product or a partnership?
Contact your ESET representative.
www.eset.com

Bringing MSPs the opportunity to manage and deploy their customers' ESET protection directly from SolarWinds N-Central, **ESET Direct Endpoint Management plugin for SolarWinds N-Central** is the most advanced endpoint protection plugin available on the platform.

The plugin provides MSPs with all the capabilities needed for seamless day-to-day management of endpoints with ESET antimalware, from deployment to alerts and configuration changes. The automation monitors help you automate the processes and remediate any potential issues without the need for your manual intervention.

SYSTEM REQUIREMENTS

ESET Business Product Licenses

Active licenses of any of the following ESET endpoint products:

- ✓ ESET Endpoint Antivirus for Windows and macOS
- ✓ ESET Endpoint Security for Windows and macOS
- ✓ ESET File Security for Microsoft Windows Server
- ✓ ESET Mail Security for Microsoft Exchange Server

For the complete list of supported ESET products visit help.eset.com.

SolarWinds N-Central

To review the system requirements, please visit SolarWinds N-Central's website.

Capabilities

ESET Direct Endpoint Management plugin for SolarWinds N-Central relies on automation monitors, executed at predefined time intervals. You can monitor the following:

- Check if ESET antimalware is installed

- Check the protection status

- Report the last on-demand scan

- Report the last threat detection (on-access detection)

In addition to monitors there are tasks which can be run separately, or they can be triggered by the above monitors. There are altogether 7 types of tasks:

DEPLOY AND ACTIVATE

Downloads, installs and activates the most recent ESET product version. (Also uninstall is available)

ACTIVATE

A standalone activation task – re-sends license information to the endpoint to activate it

DE-ACTIVATE

Rescinds activation from the product

ON-DEMAND SCAN

Initiates a scan; lets you define scan targets and the scan profile

CONFIGURE

Sends a configuration file with policy to endpoints

UPDATE

Updates detection definitions

UPGRADE

Performs an upgrade to a newer product version

The screenshot shows a configuration window titled "AUTOMATION POLICY" with a help icon in the top right. The window is divided into two columns. The left column contains labels for "Repository Item:", "Description:", "File Name:", "Scan Targets (default: \${DriveAll}|\${DriveAllBoot}|\${Memory}):", and "Scan Profile (default: @Smart scan):". The right column contains a dropdown menu with "ESET Task - On-Demand Scan" selected, a description "Initiate an On-Demand scan - v1.0.0.0", the file name "ESET Task - On-Demand Scan.amp", the scan targets "\${DriveAll}|\${DriveAllBoot}|\${Memory}", and the scan profile "@Smart scan".

Figure 1 // On-demand scan setup

ESET IN NUMBERS

110m+
users
worldwide

400k+
business
customers

200+
countries
& territories

4000+
MSPs
worldwide